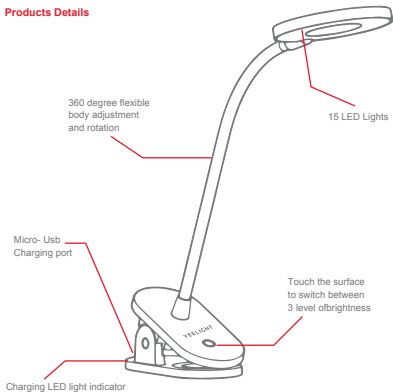




Yeelight LED J1 Clip Lamp User Manual

Products Details



Installation Guide

1. Insert the USB cable into the product to charge it.



2. When it is charging via a power plug, light will be reflected to show it is charging.
No light shows that the product has been fully charged.



3. Ensure that the power plug is at DC 5V. Charging using a USB from desktop / laptop whilst switching on the light will cause a longer charging time.



* Please do not use power plug above DC 5V. Please strictly follow the steps in the installation manual.

Improper usage may cause accidents such as fires, and electric shock.

Touch Control Switch Instructions

Do note and make sure that your hand is not wet during the touch operation of the switches on the surface of the lamp as it will reduce the sensitivity and affect the user experiences.

The lamp has 3 levels of brightness, Low, Mid, High. To turn on the lamp, tap the circle icons once.



Turn on / off / level of brightness

To turn off the lamp, slight touch the circle icons to cycle through the lights before it is turned off.

Safety Instructions

1. Before use, please make sure that your voltage is appropriate to the product's working voltage. Using the product at a voltage other than the specified one may damage the product and create safety hazards;
2. The LED module cannot be replaced. Do not disassemble the product without proper authorization;

Names and Content of Hazardous Substances in Product

Component name	Hazardous substance					
	Lead (Pb)	Mercury (Hg)	Cadmium (Cd)	Hexavalent chromium (Cr(VI))	Polybrominated biphenyls (PBB)	Polybrominated diphenyl ethers (PBDE)
Lamp Shade						
Plastic parts	○	○	○	○	○	○
Metal housing	○	○	○	○	○	○
Circuit board	X	○	○	○	○	○
LED lighting	○	○	○	○	○	○
Lamp holder	○	○	○	○	○	○

This table is created according to SJ/T 11364 standard.

○: Indicates that the hazardous substance contained in all homogeneous materials of this component is within the limit of the GB/T 26572 standard.

X: Indicates that the hazardous substance contained in a certain homogeneous material of this component exceeds the GB/T 26572 standard.



Basic Parameters

Product Model: YLTD10YL

Color Temperature Range: 3900K

Operating Temperature: -10°C to +40°C

Operating Humidity: 0% to 85% RH

Service Life: Approx. 25,000 hours

Power Factor: 1.0A

Rated Power: 5W

Rated Input: 5v

Please read this manual carefully before using the product

For asia Yeelight after-sales services website: www.yeelight.asia

Or email us enquiry@tradegallery.co for more information regarding the after-sales services

Standard Compliance: Q/QDYLK0001-2016

Manufacturer: Qingdao Yeelink Information Technology Co., Ltd.

Address: B4, Floor 10, Tower B, International Innovation Park, #1 First Keyuanwei Rd.,
Laoshan District, Qingdao City